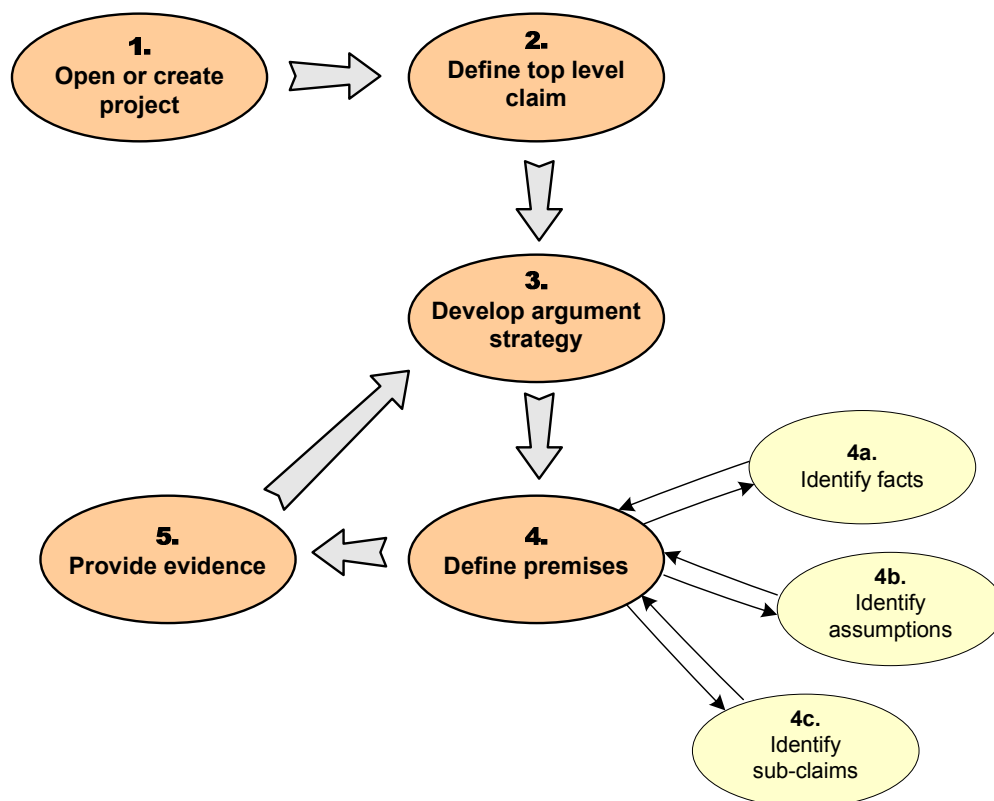


INTRODUCTION TO TCTEDITOR

TCTEditor is an on-line team-oriented software tool supporting development of argumentation structures – trust cases. Trust cases encompass the argument and related evidence, which together demonstrate that an object exhibits certain properties. Trust cases have a tree-like structure with several dedicated node types: claims, arguments, facts, assumptions, references, contexts. TCTEditor can store many trust cases (and their versions) categorized into projects.

General scenario of TCTEditor usage



1. Open a trust case to develop – open a project, its specific version or create a new project
2. Define the object property to argue (e.g. system trustworthiness) as the top level claim of the trust case
3. Develop argument strategy to conclude about the argued claim from premises which are easier to be demonstrated
4. Identify and document premises
 - a) Identify facts - statements of verified information about something that is the case or has happened
 - b) Identify assumptions - statements assumed to be true for which no evidence is provided
 - c) Identify sub-claims – statements to be further argued for
5. Identify documents with evidence to appropriate premises and attach them via references